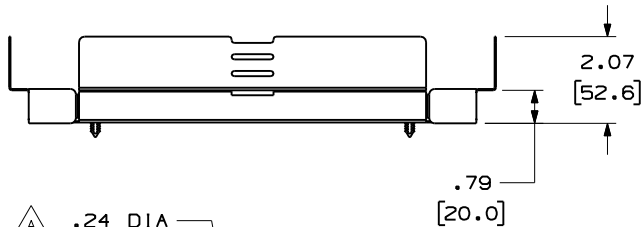
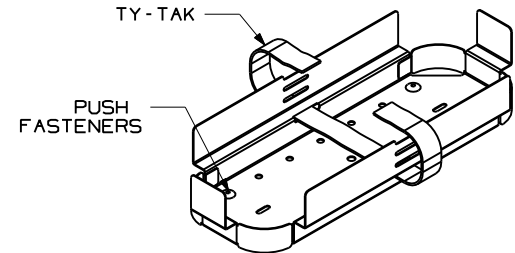
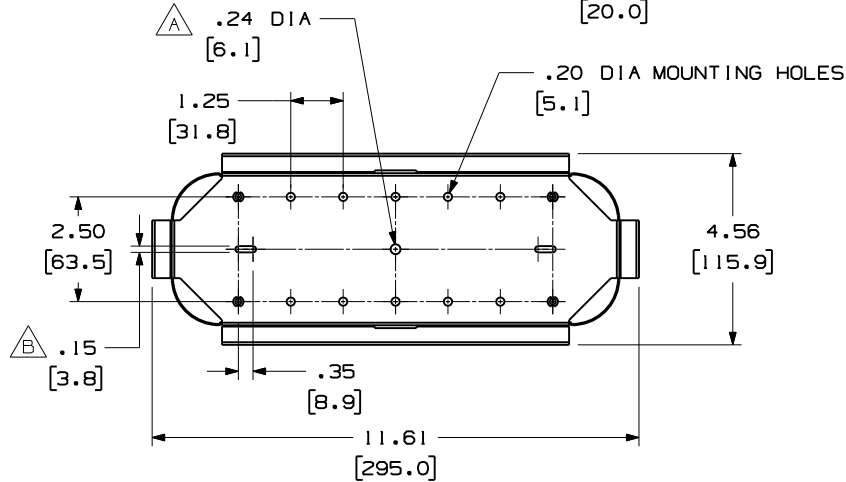


THIS COPY IS PROVIDED ON A RESTRICTED BASIS AND IS NOT TO BE USED IN ANY WAY DETRIMENTAL TO THE INTERESTS OF PANDUIT CORP.

PANDUIT P/N	WEIGHT
FST24H3	.2 LB/EA 90 g/EACH



- NOTES:
1. SEE CATALOG FOR COMPLETE LIST OF PARTS APPLICABLE FOR USE WITH THIS PRODUCT.
 2. DIMENSIONS IN PARENTHESIS ARE METRIC.
 3. SPLICE TRAY HOLDER WILL ACCOMMODATE UP TO (3) FST24 SPLICE TRAYS.
 4. SPLICE TRAY HOLDER IS SUPPLIED WITH 1 TY-TAK AND 4 PUSH FASTENERS
 5. MATERIAL - ALUMINUM



MODEL FILENAME V10049FN_FST24H3_ASSY_01.prt
CAD FILENAME/LAYERS V10049FN_DC_01A.prt (1)

PANDUIT CORP. TINLEY PARK, ILLINOIS
SPLICE TRAY HOLDER (FST24H3)
CUSTOMER DRAWING

UNLESS OTHERWISE SPECIFIED, DIMENSIONAL TOLERANCES ARE:
(.X) ± .03 (,.XXX) ± .005
(.XX) ± .015 ANGLES ± 1°

UNLESS OTHERWISE SPECIFIED, ALL DIMENSIONS ARE GIVEN IN INCHES, THIRD ANGLE PROJECTION.

DRAWN BY JDWE
DATE 5-2-02
CHK'D

MAT'L:

SEE NOTES

SCALE NONE

DRAWING NO.

10049-59

DWG SIZE A

REV	DATE	BY	CHK	DESCRIPTION	ECN	R	CUST	SUP	OTH
O1	5-10-02	RYB		A. ADD .24 DIA HOLE; B. ADD .15 X .35 SLOTS (2X);	10049-59				
R	5-2-02	JDWE		RELEASED TO PRODUCTION	10049-59				